



# VENTUS PROCESS

PRODUCTIVE SOLUTIONS FOR EFFICIENT PROCESSES



EFFICIENT ENGINEERING



EFFICIENT MANUFACTURING



PRODUCTIVE INSTALLATION



PRODUCTIVE SERVICE

TURNKEY SOLUTIONS



**ABOUT US**

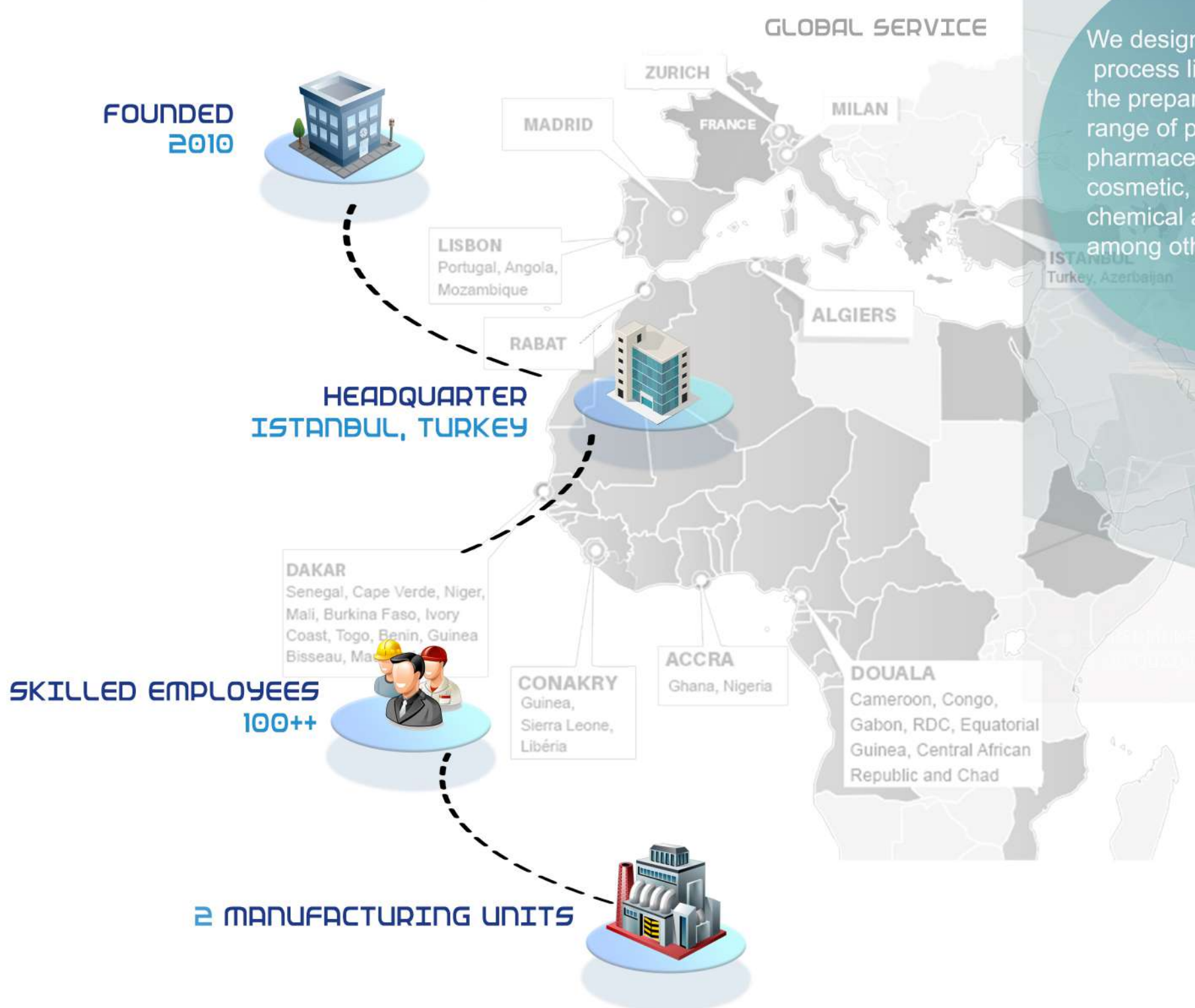
**FROM SINGLE PRODUCTION UNITS**

**UP TO A FULL PROCESS LINE**

We design equipment and process lines that focus on the preparation of a broad range of products for the pharmaceutical, biopharma, cosmetic, biotechnology, chemical and food industries, among others.

We integrate and install the project in your production plant, while guaranteeing that the implementation is faithful to the original design with high-tech components and customized system for each installation.

<b>PROCESS ENGINEERING</b>	<b>DESIGN ENGINEERING</b>	<b>PLAN</b>	<b>AUTOMATION</b>
<b>MANUFACTURING</b>	<b>QUALIFICATION VALIDATION</b>	<b>DOCUMENTATION</b>	<b>FAT &amp; TRAINING</b>
<b>SAT &amp; COMMISSIONING</b>	<b>FABRICATION</b>	<b>INSTALLATION</b>	<b>SERVICE</b>



## VISION/MISSION

To lead the global industrial footprint with distinguished solutions and be a partner in growth for our customers. With exceptional customer focus and astute project management skills our mission is to bring inspiration and ingenuity to everything we engineer. We aim to enhance the credibility and success of our customers through our reliable path-breaking systems and equipments by being as future-oriented and diversified as the industry in which we operate.



## QUALITY POLICY

VENTUS PROCESS will ensure that every service it provides will be accepted in national and international markets and will meet customer expectations. Accordingly, the motivation of the personnel will be improved, a quality standard higher than the customer expectations will be achieved and 100 % customer satisfaction will be provided by

## SAFETY POLICY

All accidents can and should be prevented  
 Safety is most important business objective  
 Create a Safe work place  
 Establish Safe working practices  
 Ensure effective Safety training  
 Safety is all our employees responsibility  
 Every job can be done Safely



- Adopting and supporting the quality policy in all stages.
- Forming the quality standards and procedures for all main units
- Determining the quality targets and awarding personnel working according to the targets
- Providing training in all levels - lead personnel to participate these trainings
- Ensuring the involvement of all personnel in the quality management process and encouraging an improved team work.

## OCCUPATION



## OCCUPATION

- COSMETIC MANUFACTURING PLANTS
- FOOD PLANTS
- PHARMACEUTICAL MANUFACTURING FACILITIES
- WOOD INDUSTRY

- CHEMICAL PLANTS
- OIL AND GAS PLANTS
- POWER PLANTS
- INDUSTRIAL PLANTS



TURN KEY PROJECTS  
PRESSURE VESSEL  
STORAGE TANKS  
EQUIPMENT OF PROCESS  
REACTORS  
HEAT EXCHANGER



BASKET FILTER  
MIXERS, BLENTERS  
CYCLONS  
CONVEYORS AND ELEVATORS  
ABOVEGROUND / UNDERGROUND FUEL TANKS IN THE FIELD  
APPLICATIONS OF BUILDING FOR INDUSTRIES

SPECIAL MANUFACTURING  
PIPING (PROCESS LINES, STEM-HOT OIL LINE, HEATING PIPING ETC.)  
PRE-FABRICATED PIPING SPOOL  
MODULAR AND PRE-ASSEMBLED SKID  
FIRE PROTECTION SYSTEMS (HYDRANT AND SPRINKS LINE)  
ELECTRICAL / INSTRUMENTATION / AUTOMATION  
INSULATION / PAINTING



## PROJECTS

### MIXER & COMPRESSION PLANT

- Project Design-P&ID Design
- Project Management
- Construction Management
- Fabrication for platform for mixers and IBC lift and Compress Machine
- Pneumatic Control Installation for necessary instruments
- Device installation such as Mixers, IBC Lift, Compress Machine
- Instrument Installation
- Equipment Installation
- Automation

MIXER

### AGGLOMERATION PLANT

- Project Design-P&ID Design
- Project Management
- Construction Management
- Fabrication for large diameter insulated ducts and pipes
- Pneumatic Control Installation for necessary instruments
- Device installation such as Flexomix, Product Hoppers, Boilers, Heat Exchangers, Filters...
- Instrument Installation (Explosion Valves, Rotary Valves, Ball Valves, Butterfly Valves...)
- Equipment Installation

AGGLOMERATION

## PROJECTS

### PLASTIC PRODUCTION PLANT

#### PLASTIC PRODUCTION PLANT

- Project Design
- Project Management
- Construction Management
- Fabrication for platform, mixers, exchangers, tanks, decanters, reactors, cooling tanks, vacuum tanks
- Pneumatic Control Installation for necessary instruments
- Device installation such as platform, mixers, exchangers, tanks, decanter
- Instrument Installation
- Equipment Installation
- Automation

### GELATIN PRODUCTION PLANT

- Project Design
- Construction Management
- Fabrication for tanks and mixers
- Pneumatic Control Installation for necessary instruments
- Device installations
- Instrument Installation
- Equipment Installation

### GELATIN PRODUCTION PLANT



# PROJECTS

## EMULSION POLYMERIZATION

### EMULSION POLYMERIZATION PLANT

- Project Design
- Construction Management
- Fabrication of Costic Tanks, AMN Tank, Blender, Crossbeam Wing, Reactors, Emission Tanks, Heat Exchangers, Various Tanks
- Pneumatic Control Installation for necessary instruments
- Device installations
- Insturment Installation
- Equipment Installation

### WOOD PRODUCTION PLANT

- Project Design
- Construction Management
- Fabrication of platforms(stairs railings floor), Spray Column, Condenation Tank, Extension Tank, Dosage Tank, Steam Water Seperation
- Pneumatic Control Installation for necessary instruments
- Device installations
- Insturment Installation
- Equipment Installation

## WOOD PRODUCTION PLANT



## PROJECTS

### COSMETIC PRODUCTION

#### COSMETIC PRODUCTION PLANT

- Project Design
- Construction Management
- Fabrication of Cream Filler Lines, Water Feed Tank and Piping, Mixers, Mixers and Buffer Tanks
- Pneumatic Control Installation for necessary instruments
- Device installations
- Instrument Installation
- Equipment Installation
- Automation

#### TEXTILE & CHEMICAL PLANT

- Project Design
- Construction Management
- Fabrication of Condenser, Blenders, Styrene Mixers, Storage Tanks, Piping
- Pneumatic Control Installation for necessary instruments
- Device installations
- Instrument Installation
- Equipment Installation
- Automation

### TEXTILE & CHEMICAL PLANT





# PROJECTS

## AGRICULTURE FACTORY

### AGRICULTURE FACTORY

- Project Design
- Construction Management
- Fabrication of Mixer, Filters, Platform, Ducting, Piping, Insulation, Tanks
- Pneumatic Control Installation for necessary instruments
- Device installations
- Instrument Installation
- Equipment Installation
- Automation

## CARDBOARD FACTORY

## CARDBOARD FACTORY

- Project Design
- Construction Management
- Fabrication of Rejectsorter Accepts Chest, MC Pump Standpipe, Bleaching Pipe, Homogenisation, Gyrosan Filter, PM3 Gyrosand, Water Buffer Tank
- Pneumatic Control Installation for necessary instruments
- Device installations
- Instrument Installation
- Equipment Installation
- Automation



CONTACT US

VENTUS Process Engineering Ind. and Trade Ltd., Co.  
Adress: Yakuplu Mah. Geçit Sok. No.17 /6 Vera Plaza  
K.4 D.12-17 Beylikdüzü - İSTANBUL / TURKEY 34524  
Mobile: +90 532 574 19 18  
Tel: +90 212 486 00 20  
Web: [www.ventusprocess.com](http://www.ventusprocess.com)  
E-mail: [info@ventusprocess.com](mailto:info@ventusprocess.com)

